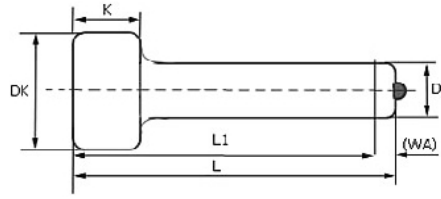


WELDING SHEAR STUD CONNECTOR WEIGHTS PER UNIT



SIZE	LENGTH	WELDING STUD DIAMETER				
		mm	13mm	16mm	19mm	22mm
50	73					
55	78		123			
60	83		131	188		372
65	88		139	199		390
70	93		147	210		409
75	98		155	221		427
80	104		163	232	302	446
85	109		171	243	317	466
90	114		179	254	332	484
95	119		187	265	347	502
100	124		195	277	362	523
105	129					
110	134		211	299	392	560
115	139		219			
120	144		226	321	422	597
125	149					
130	154		242	343	452	635
135	159					
145	164		257	365	482	672
140	169					
150	174		272	388	511	710
160			287	410	541	747
170			302	432	571	785
180			317	455	601	821
190			332	478	631	860
200			347	501	661	898

WELDING SHEAR STUD CONNECTOR DIMENSIONS

		13mm	16mm	19mm	22mm	25mm
D	min	12.57	15.57	18.48	21.48	24.48
	max	13.00	16.00	19.00	22.00	25.00
DK	min	21.58	28.58	31.50	34.50	39.50
	max	22.42	29.42	32.50	35.50	40.50
K	min	7.55	7.55	9.55	9.55	11.45
	max	8.45	8.45	10.45	10.45	12.55
WA		5	5	6	6	6
L1		40-200	50-250	60-300	80-300	80-300

**WELDING SHEAR STUD CONNECTOR DIMENSIONS CHEMICAL
COMPOSITION**

WELDING STUD MATERIAL	C	Si	Mn	P	S	AI
ML15AI	0,13-0,18	≤ 0,1	0,3-0,6	≤ 0,035	≤ 0,035	≥ 0,02

WELDING SHEAR STUDS MECHANICAL PROPERTIES

TENSILE STRENGTH	YIELD POINT	ELONGATION
≥ 420	≥ 340	≥ % 14

Glotech (China) Industrial Limited
Room 1611b, 16/F, Ho King Commercial Centre
,2-16 Fa Yuen Street, Mongkok,
Kowloon,
Hongkong

Email: glotechchina@gmail.com